



# Cobbler Dress and Set

Sizes 2-20  
with cup sizes A-H

5/8 inch (1.5 cm) seam allowances  
are included on all pattern pieces.

Page 1 of 4

### PAGE 1 PATTERN PIECES

- 1 Dress/Top Center Front
- 3 Dress/Top Back
- 4 Front Ruffle
- 8 Armhole Binding

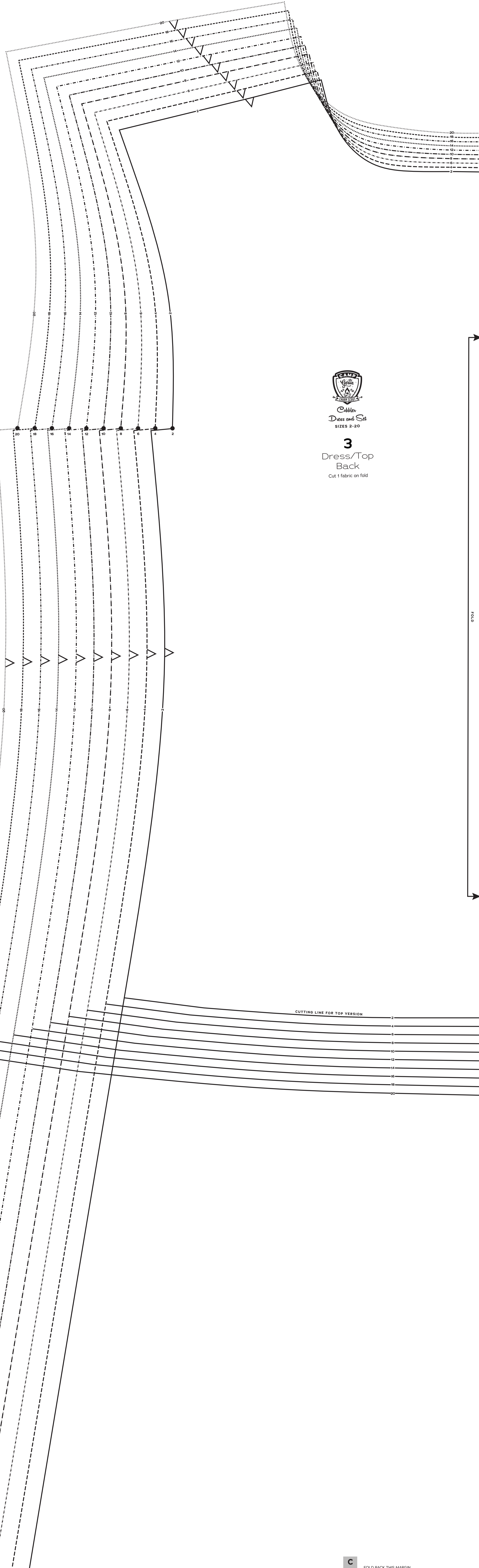
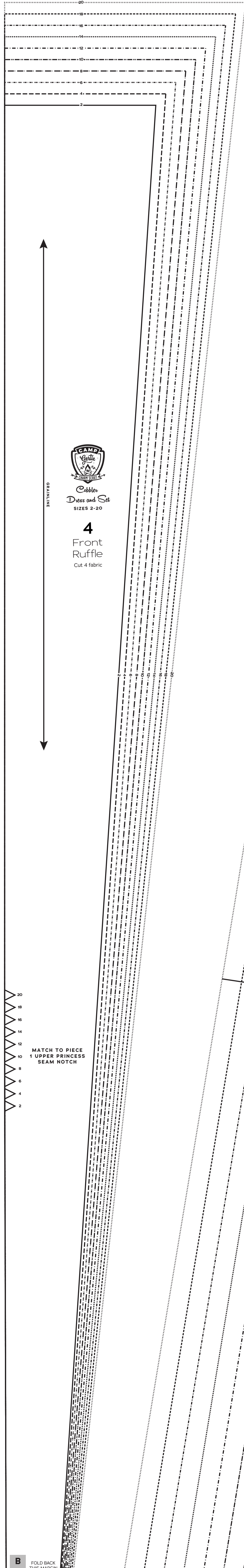
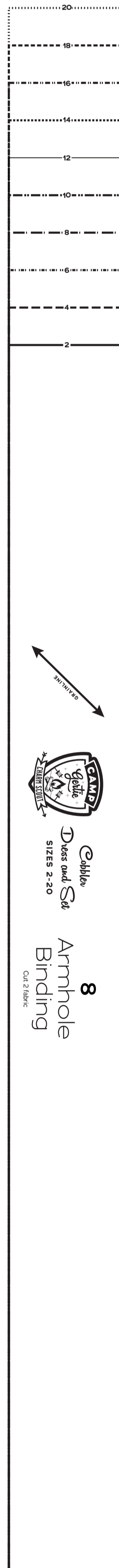
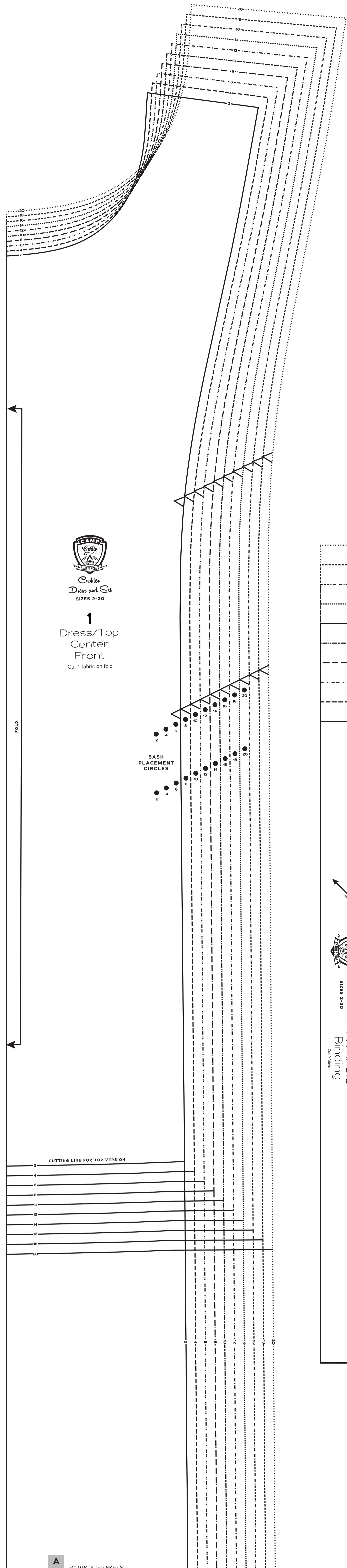
**PATTERN SIZE KEY**

2	-----
4	-----
6	-----
8	-----
10	-----
12	-----
14	-----
16	-----
18	-----
20	-----

**SYMBOL KEY**

- grainline arrow
- match point/  
placement mark
- 1" test square

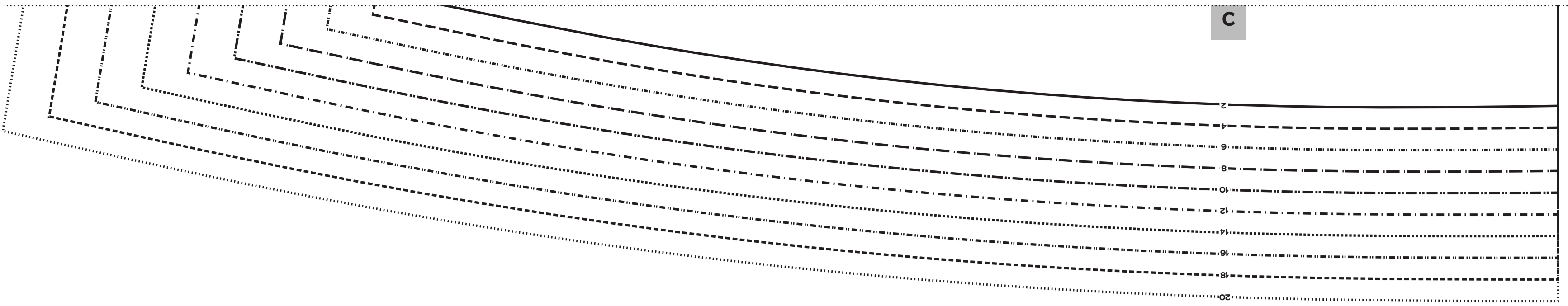
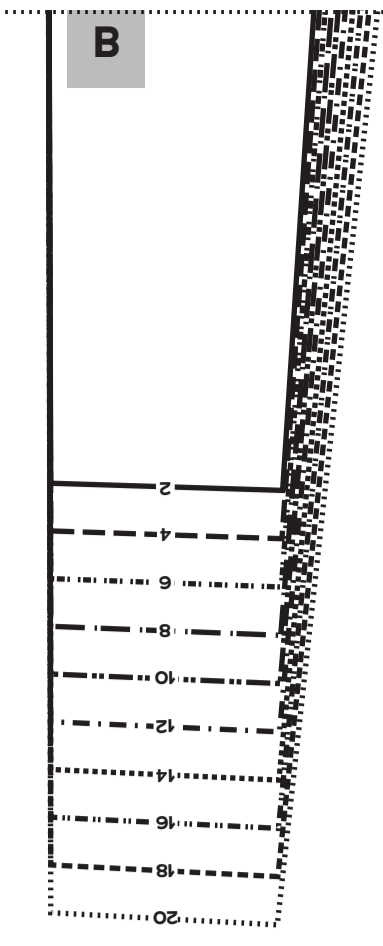
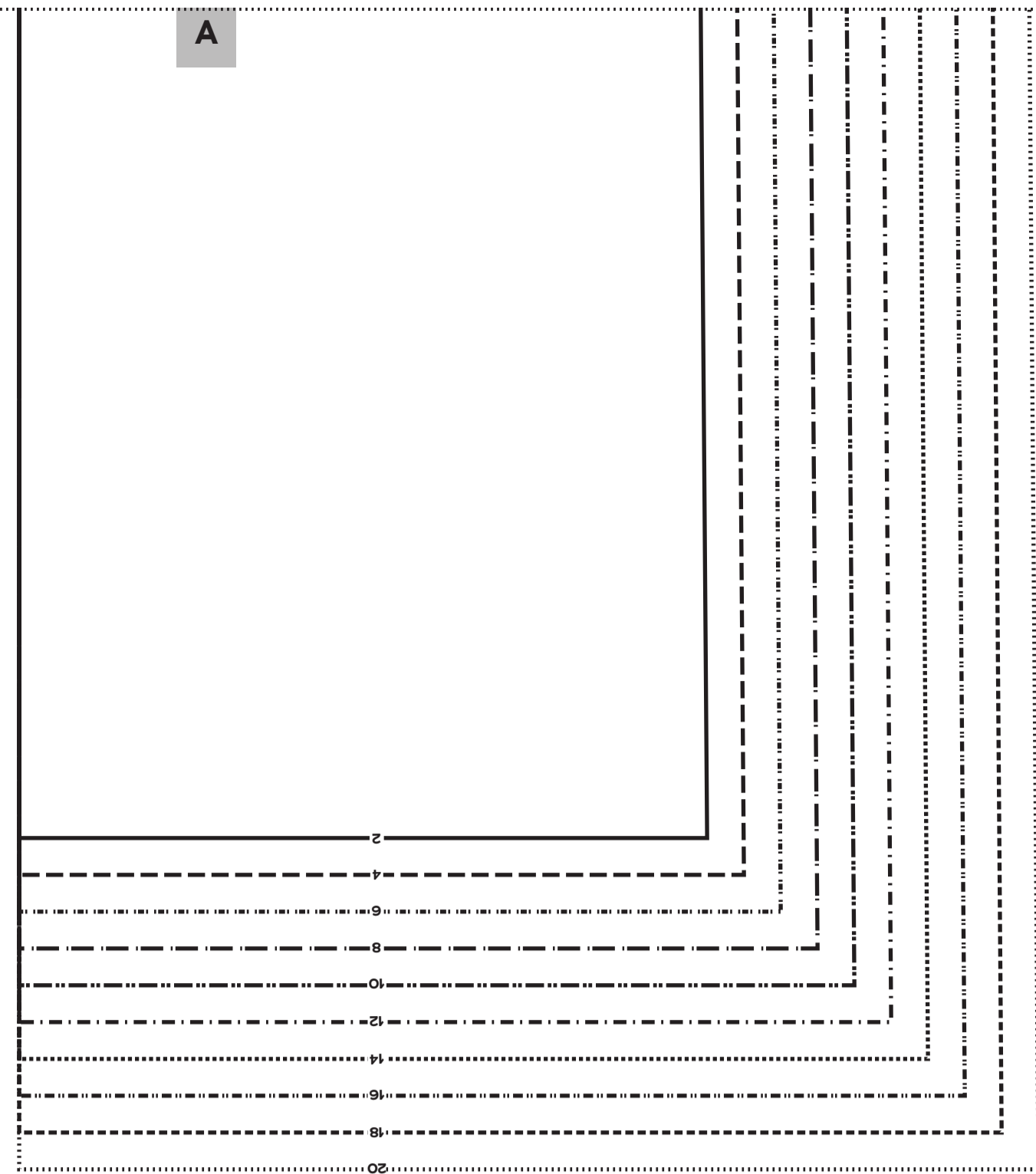
Match all letter blocks, fold back margin as indicated, and tape pattern pieces together before cutting fabric.



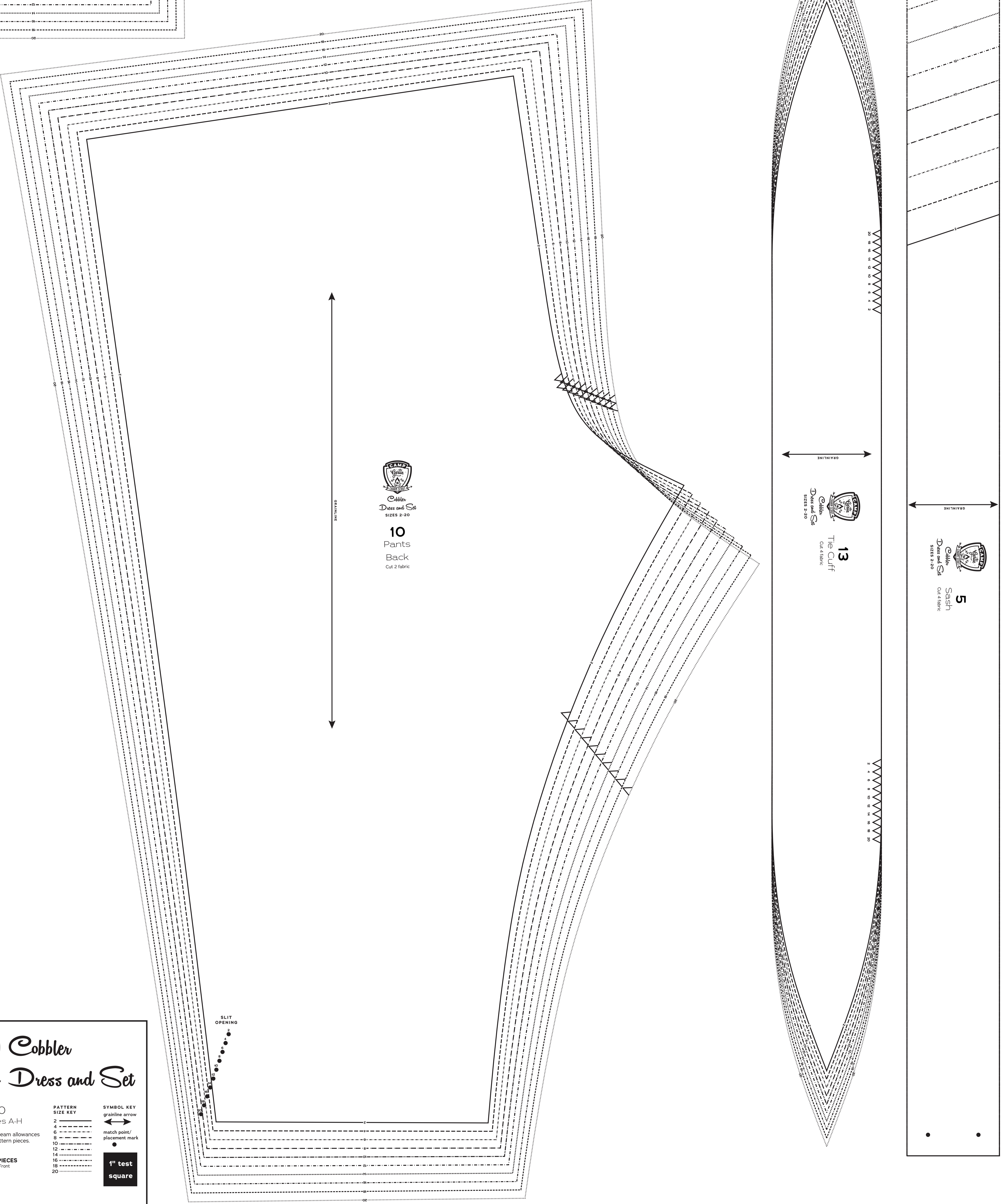
A FOLD BACK THIS MARGIN

B FOLD BACK THIS MARGIN

C FOLD BACK THIS MARGIN



Match all letter blocks, fold back margin as indicated, and tape pattern pieces together before cutting fabric.



**CAMP**  
Gertie  
Cobbler  
Dress and Set  
SIZES 2-20

**10**  
Pants  
Back  
Cut 2 fabric

**CAMP**  
Gertie  
Cobbler  
Dress and Set  
SIZES 2-20

**13**  
Tie Cuff  
Cut 4 fabric

**CAMP**  
Gertie  
Cobbler  
Dress and Set  
SIZES 2-20

**5**  
Sash  
Cut 4 fabric

**CAMP**  
Gertie  
Cobbler  
Dress and Set  
SIZES 2-20

Sizes 2-20  
with cup sizes A-H

5/8 inch (1.5 cm) seam allowances are included on all pattern pieces.

Page 2 of 4

**PAGE 2 PATTERN PIECES**

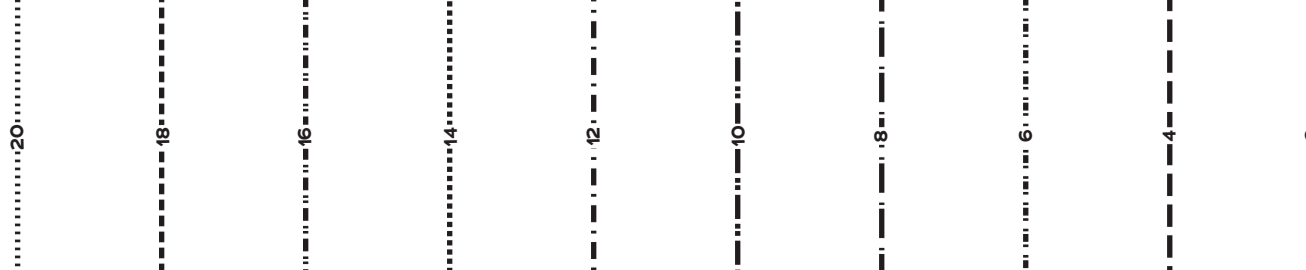
1 Dress/Top Center Front	18
3 Dress/Top Back	20
4 Front Ruffle	
5 Sash	
7 Neckline Binding	
10 Pants Back	
13 Tie Cuff	

**PATTERN SIZE KEY**

2 ————  
4 ————  
6 ————  
8 ————  
10 ————  
12 ————  
14 ————  
16 ————  
18 ————  
20 ————

**SYMBOL KEY**

grainline arrow  
match point/  
placement mark  
1" test square



**CAMP**  
Gertie  
Cobbler  
Dress and Set  
SIZES 2-20

**7**  
Neckline  
Binding  
Cut 1 fabric



# Cobbler Dress and Set

Sizes 2-20  
with cup sizes A-H

5/8 inch (1.5 cm) seam allowances  
are included on all pattern pieces.

Page 3 of 4

**PAGE 3 PATTERN PIECES**  
2 Dress/Top Side Front, A-DD Cup  
2 Dress/Top Side Front, F-H Cup

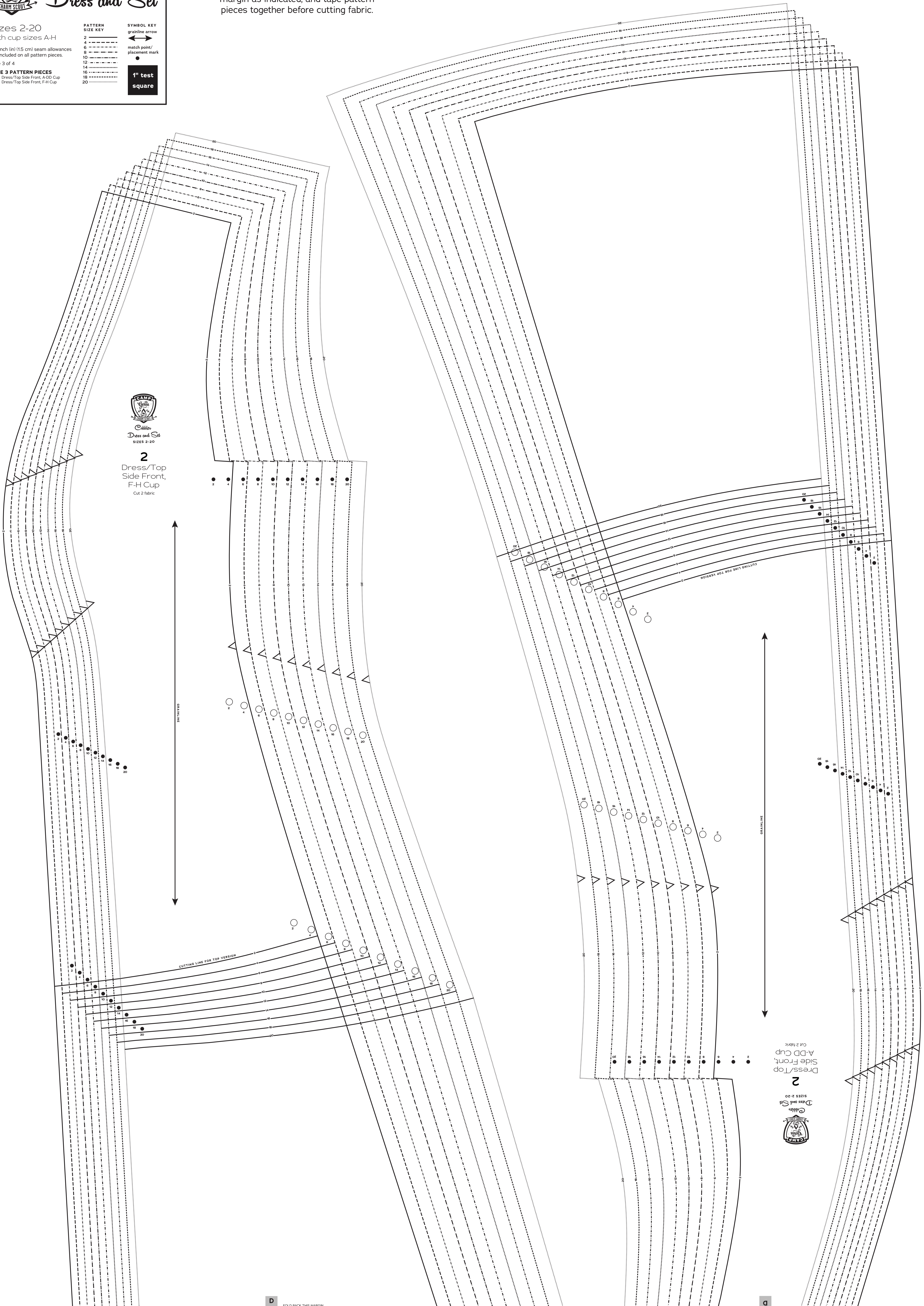
**PATTERN SIZE KEY**

2	-----
4	-----
6	-----
8	-----
10	-----
12	-----
14	-----
16	-----
18	-----
20	-----

**SYMBOL KEY**

- grainline arrow
- match point/  
placement mark
- 1" test square

Match all letter blocks, fold back margin as indicated, and tape pattern pieces together before cutting fabric.



Cobbler Dress and Set

SIZES 2-20

2 Dress/Top Side Front, F-H Cup  
Cut 2 fabric



Cut 2 fabric

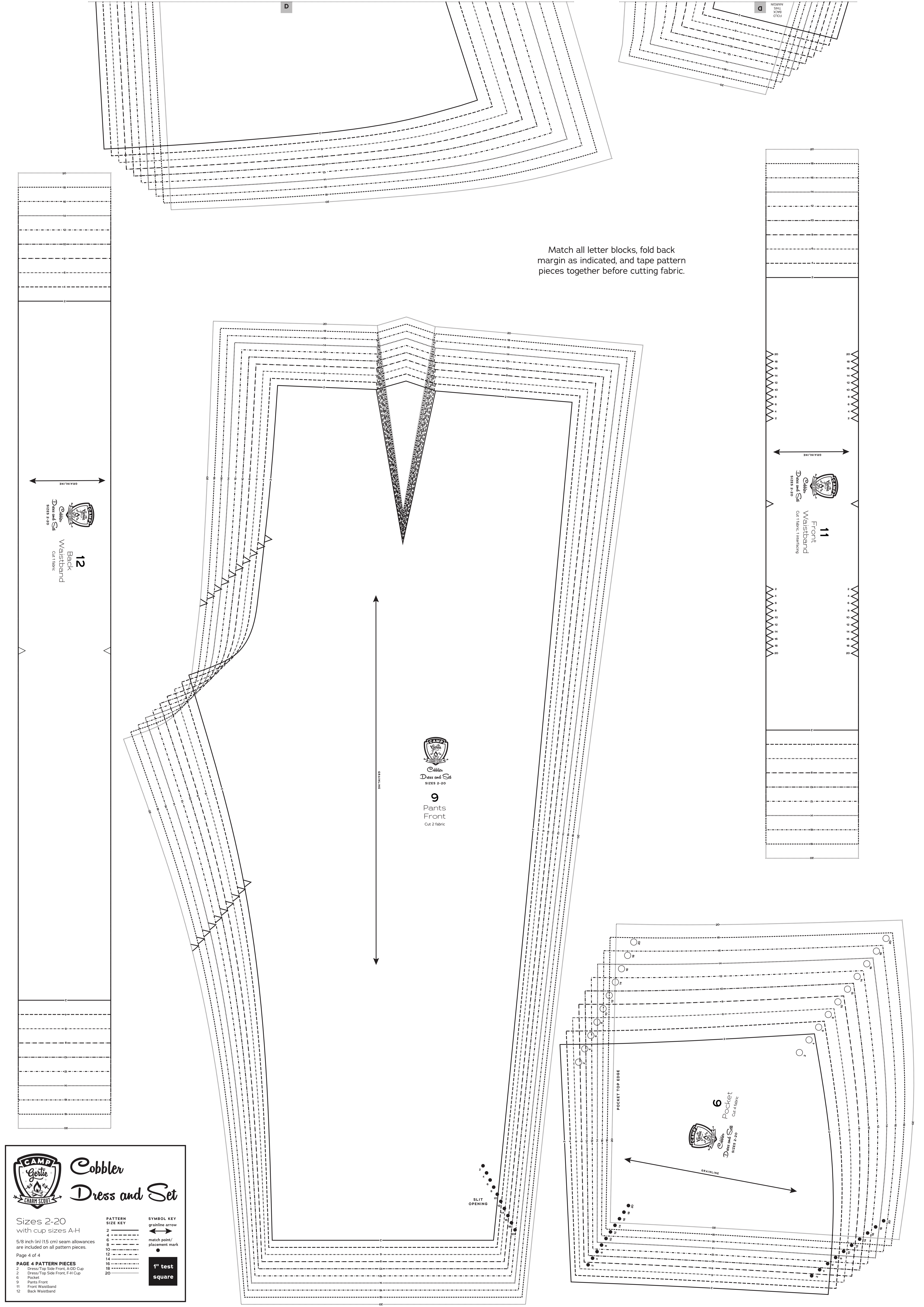
2 Dress/Top Side Front, A-DD Cup

SIZES 2-20

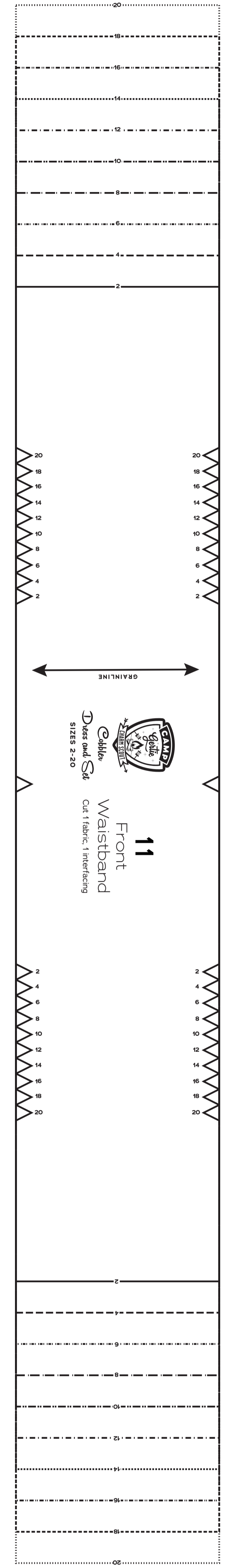
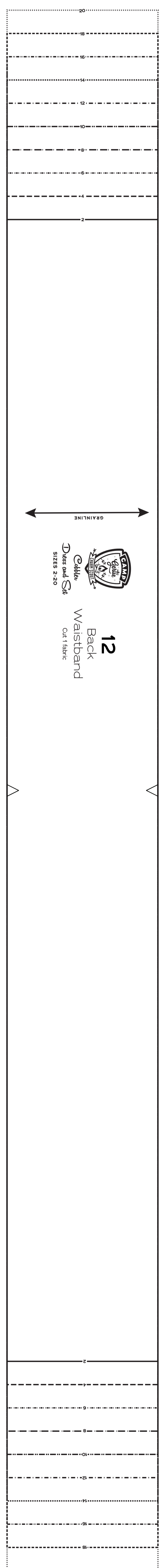
Cobbler Dress and Set

D FOLD BACK THIS MARGIN

d



Match all letter blocks, fold back margin as indicated, and tape pattern pieces together before cutting fabric.



**CAMP Gertie**  
CHARM SCOUT

# Cobbler Dress and Set

Sizes 2-20 with cup sizes A-H

5/8 inch (1.5 cm) seam allowances are included on all pattern pieces.

Page 4 of 4

**PAGE 4 PATTERN PIECES**

- 2 Dress/Top Side Front, A-DD Cup
- 2 Dress/Top Side Front, F-H Cup
- 6 Pocket
- 9 Pants Front
- 11 Front Waistband
- 12 Back Waistband

**PATTERN SIZE KEY**

- 2 ————
- 4 ————
- 6 ————
- 8 ————
- 10 ————
- 12 ————
- 14 ————
- 16 ————
- 18 ————
- 20 ————

**SYMBOL KEY**

- ↔ grainline arrow
- ◁ match point/ placement mark
- 1" test square

**CAMP Gertie**  
CHARM SCOUT

Cobbler Dress and Set  
SIZES 2-20

**9**  
Pants Front  
Cut 2 fabric

**CAMP Gertie**  
CHARM SCOUT

Cobbler Dress and Set  
SIZES 2-20

**6**  
Pocket  
Cut 4 fabric

**CAMP Gertie**  
CHARM SCOUT

Cobbler Dress and Set  
SIZES 2-20

**11**  
Front Waistband  
Cut 1 fabric (handbags)

**CAMP Gertie**  
CHARM SCOUT

Cobbler Dress and Set  
SIZES 2-20

**12**  
Back Waistband  
Cut 1 fabric